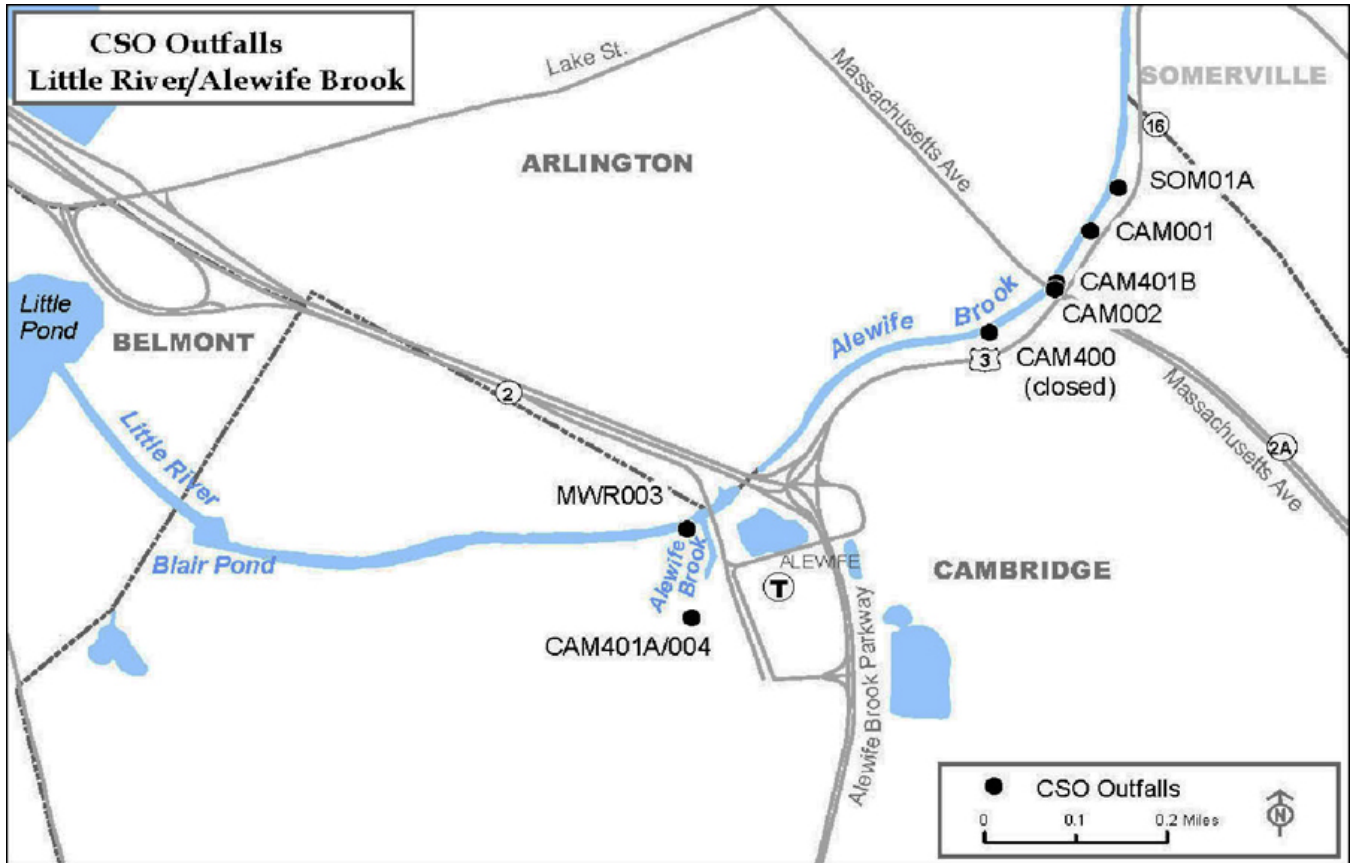


Save the Alewife Brook Info Sheet

Alewife Brook for many years has received sewage contaminated water from Combined Sewer Overflows (CSO) from Cambridge and Somerville which are activated in storm events.¹ There are currently five active CSOs that discharge into Alewife Brook. The discharges have been reduced from what they were 20 years ago, but they have not been eliminated. Not only is the brook still contaminated - but when it floods that contaminated water flows onto adjacent land and into homes.



Map from: <http://www.mwra.state.ma.us/01news/2014/041714-alewifecso.html>

Metropolitan Water Resources Agency (MWRA) CSO information -

https://www.mwra.com/harbor/html/cso_reporting.htm

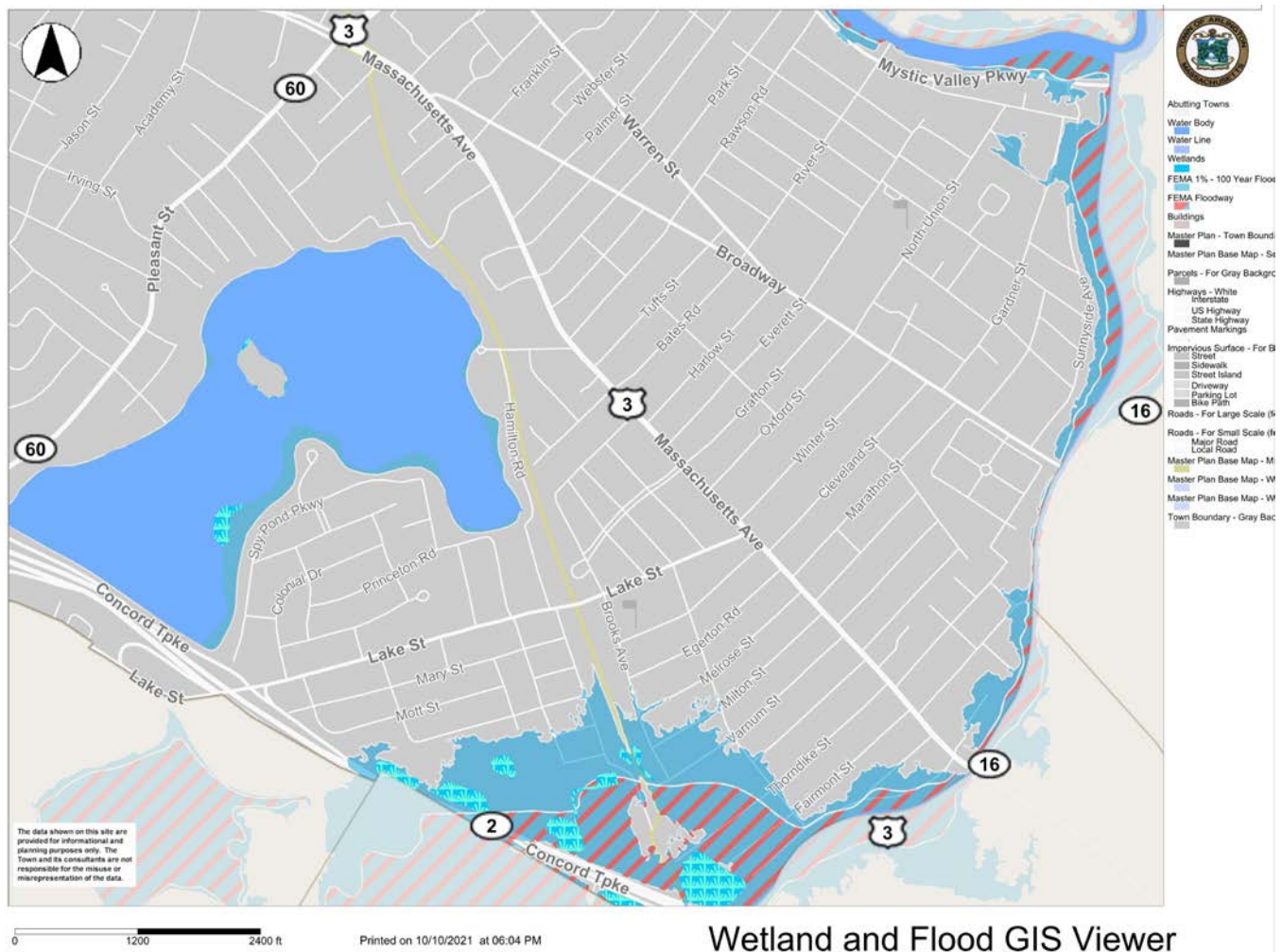
Cambridge CSO Reporting -

<https://www.cambridgema.gov/Departments/publicworks/combinedseweroverflowreporting>

Somerville CSO Reporting - <https://www.somervillema.gov/departments/alewife-brook-combined-sewer-overflow-cso-control>

¹ In addition to the CSO outlets there are numerous storm water outlets into the brook that are not shown on this map. Arlington does have storm water outlets but has **no** CSO outlets.

The following map from the Arlington GIS system shows flood plain areas in East Arlington. These are areas that would be affected in the current “100 Year Storm” although with ongoing climate change such events could become more common.



We would like to close all the remaining CSOs that discharge into Alewife Brook and can affect those who live in Arlington.

More information is available at our website: <https://savethealewifebrook.org/>

Further information and other organizations:

Mystic River Watershed Association - <https://mysticriver.org/>

Resilient Mystic Collaborative - <https://resilient.mysticriver.org/>

Info Sheet Draft 1b – 10/18/21